



# SKY JUMP™

## INSTRUCTIONS

Please keep these instructions for future reference as they contain important information.

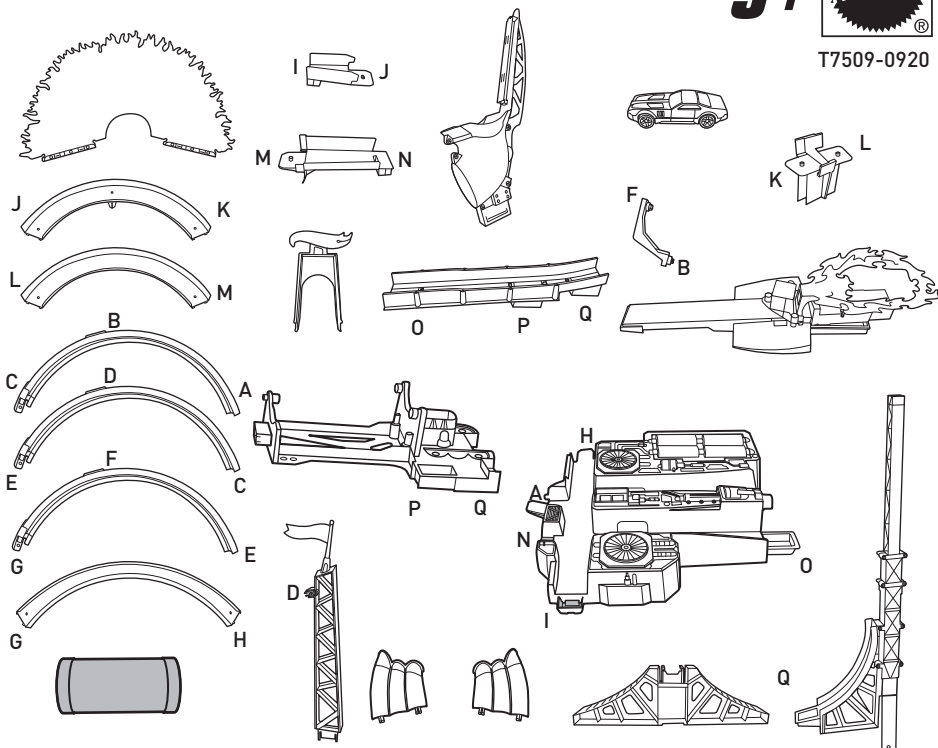
### CONTENTS

Refer to molded letters on parts for easy assembly.

5+

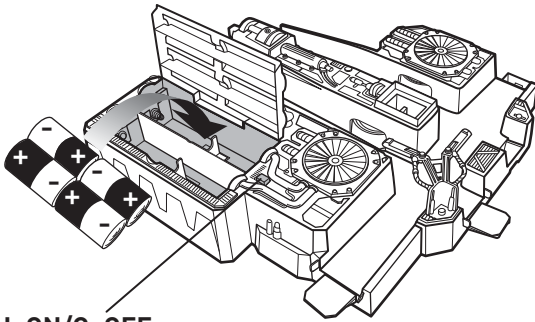


T7509-0920



# INSTALL BATTERIES

Open battery cover and insert 4 "D" size alkaline batteries (not included) as shown. For best performance, use alkaline batteries. Replace the batteries when the booster no longer propels the car through the set.



I=ON/O=OFF

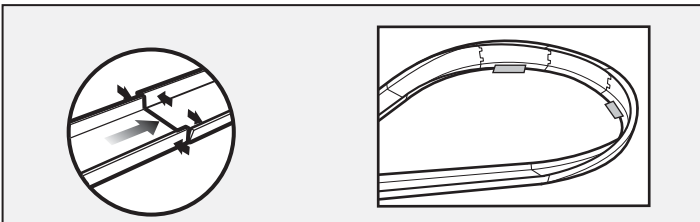
## BATTERY SAFETY INFORMATION

In exceptional circumstances batteries may leak fluids that can cause a chemical burn injury or ruin your product. To avoid battery leakage:

- Non-rechargeable batteries are not to be recharged.
- Rechargeable batteries are to be removed from the product before being charged (if designed to be removable).
- Rechargeable batteries are only to be charged under adult supervision (if designed to be removable).
- Do not mix alkaline, standard (carbon-zinc), or rechargeable (nickel-cadmium) batteries.
- Do not mix old and new batteries.
- Only batteries of the same or equivalent type as recommended are to be used.
- Batteries are to be inserted with the correct polarity.
- Exhausted batteries are to be removed from the product.
- The supply terminals are not to be short-circuited.
- Dispose of battery(ies) safely.
- Do not dispose of this product in a fire. The batteries inside may explode or leak.



Protect the environment by not disposing of this product with household waste [2002/96/EC]. Check your local authority for recycling advice and facilities.

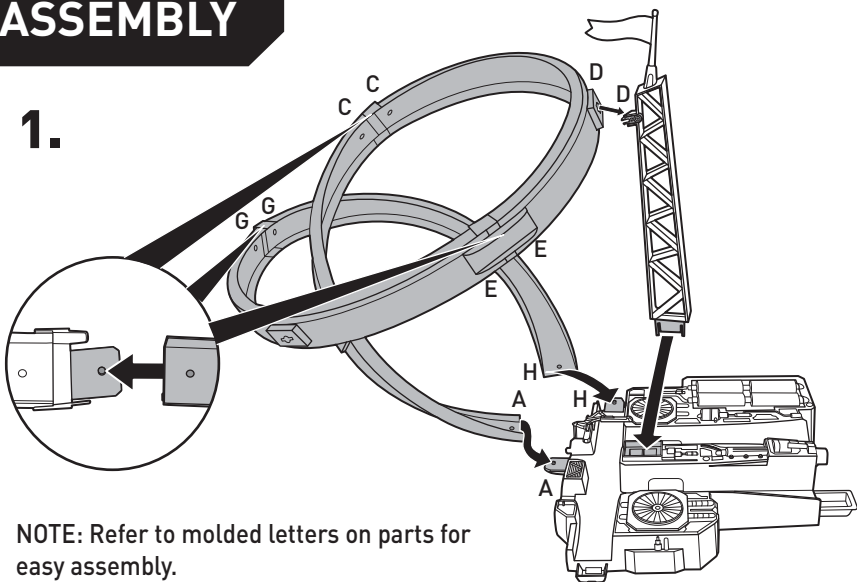


Adjust track side walls at each connection point as shown.

TO STABILIZE SET: on carpet, use books. On smooth floor, tape base to surface.

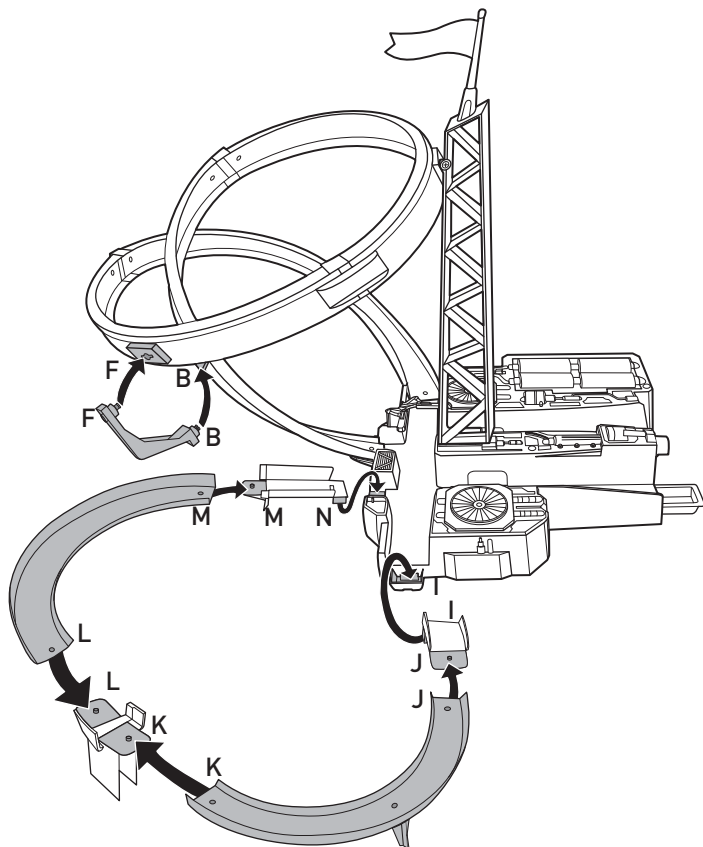
# ASSEMBLY

1.

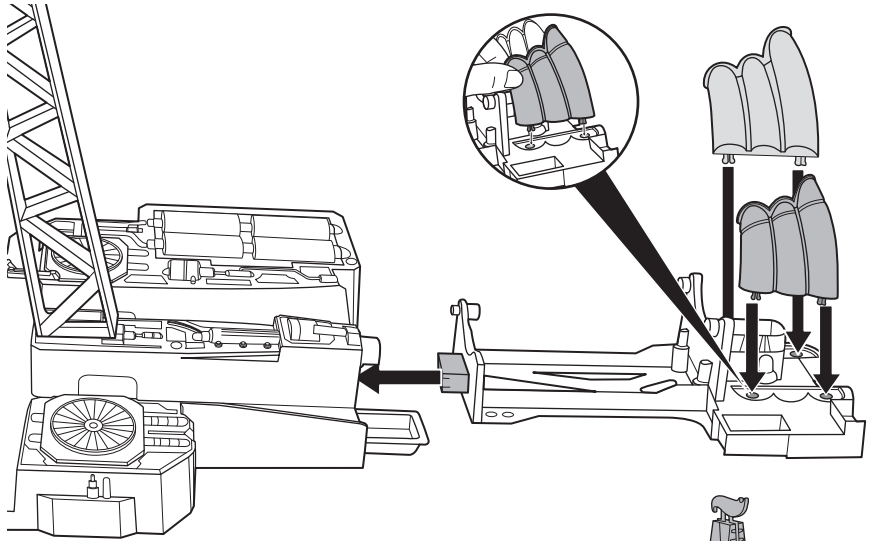


NOTE: Refer to molded letters on parts for easy assembly.

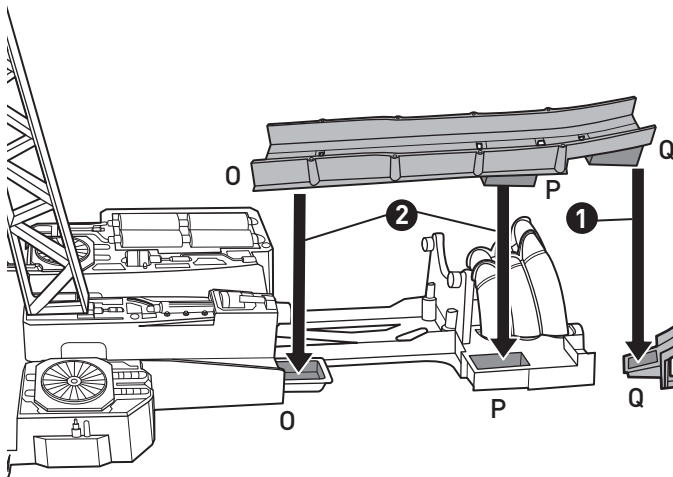
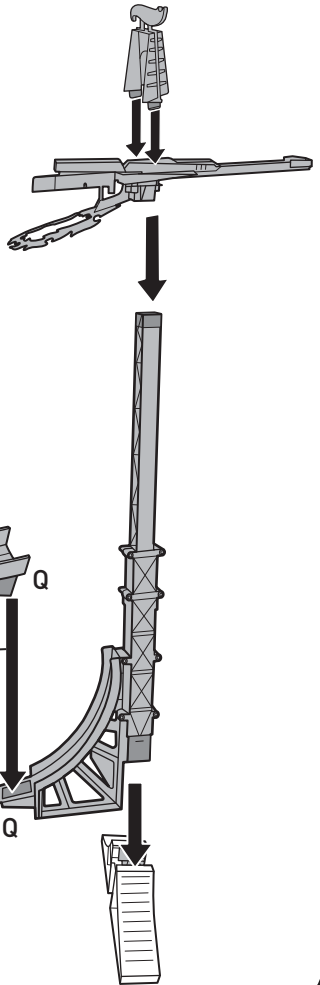
2.



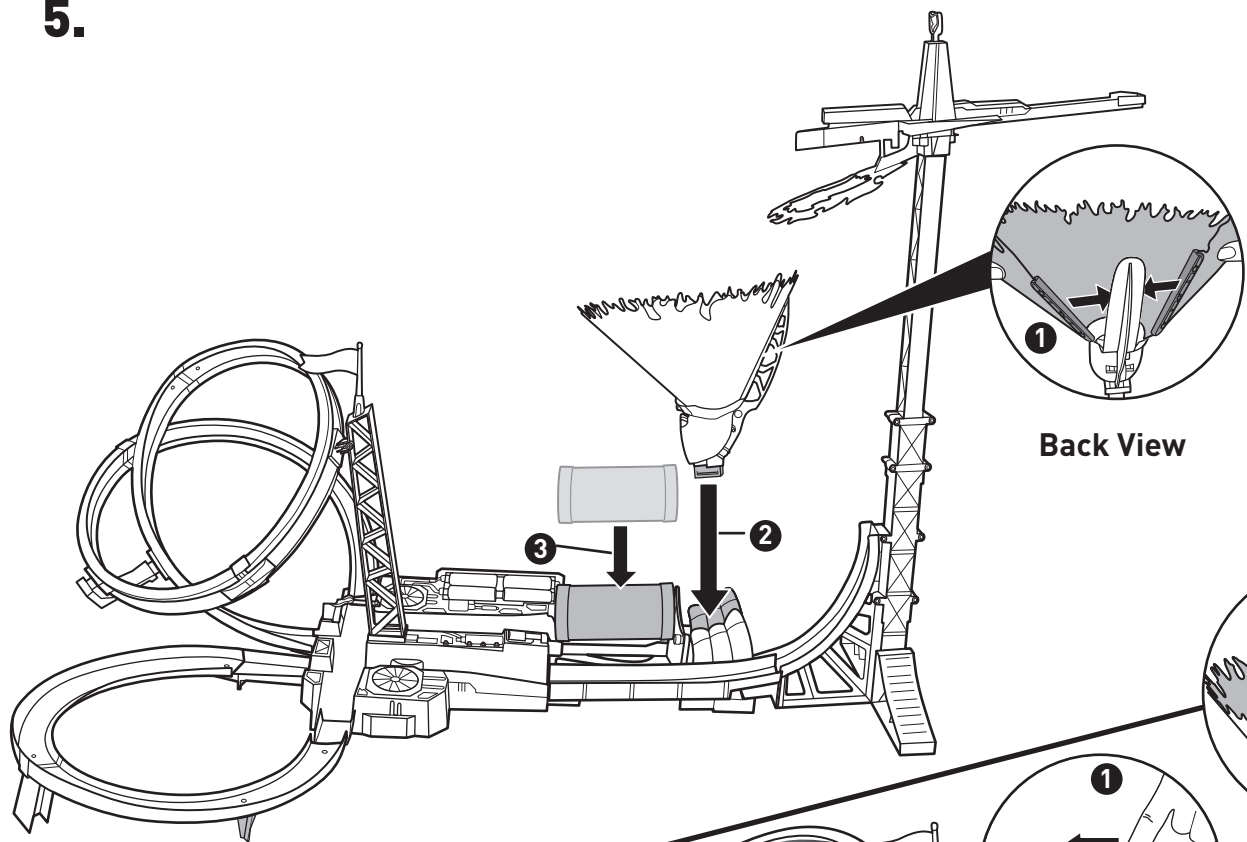
3.



4.



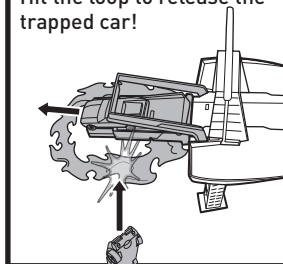
5.



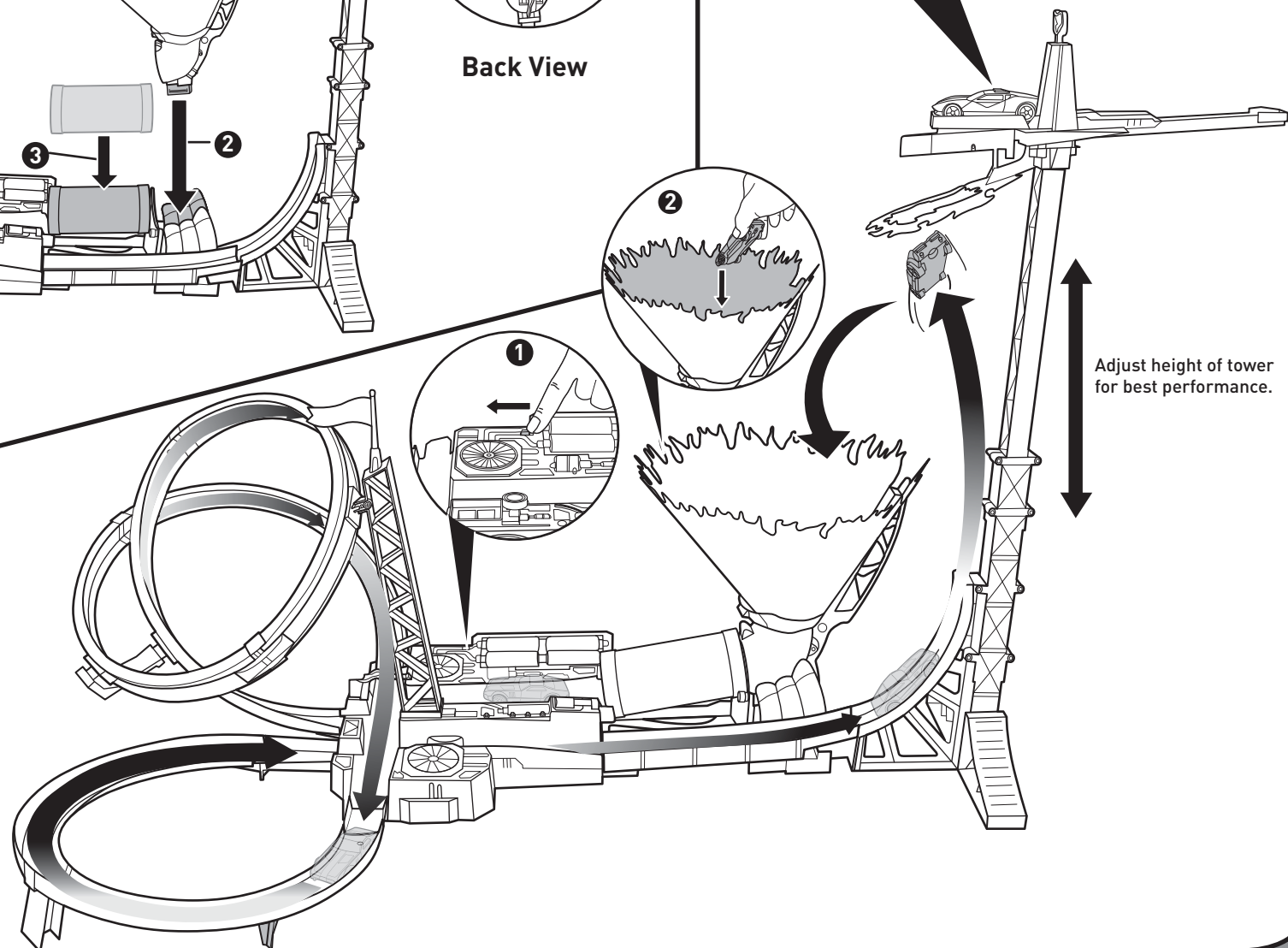
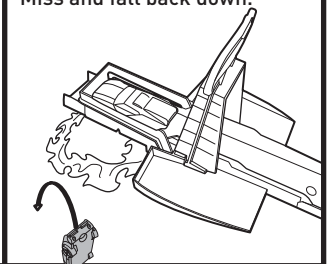
Back View

## TO PLAY

Hit the loop to release the trapped car!



Miss and fall back down.



Turn power switch ON.  
Drop car into cone to launch.

Adjust height of tower  
for best performance.