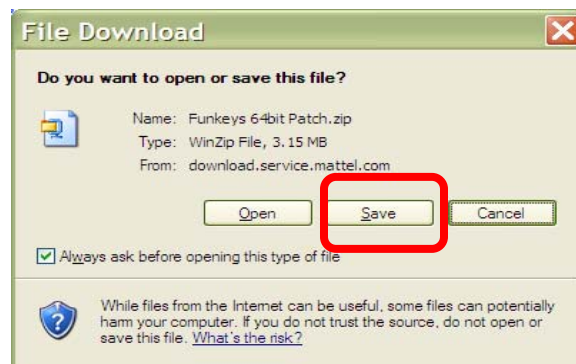


## How do I install U.B. Funkeys™ on a 64-bit system?

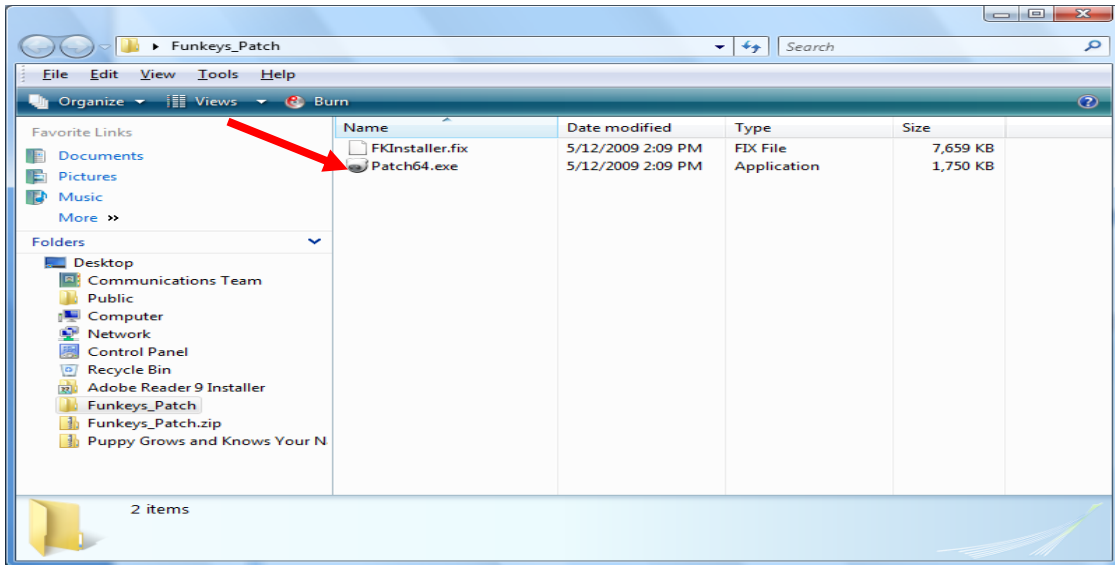
1. Download the 4.8 version of the U.B. Funkeys™ software. **Please Note: The software is a large file (over 600MB) and may take a long time to download.**  
[http://download.service.mattel.com/us/Funkeys/UB\\_Funkeys\\_4\\_8.zip](http://download.service.mattel.com/us/Funkeys/UB_Funkeys_4_8.zip)
2. Download just the patch and run it as part of your current installer.
  - Run the **U.B. Funkeys™** software from your installation disc. When the driver installs the following window will appear. Click **“OK”** and close the installer.



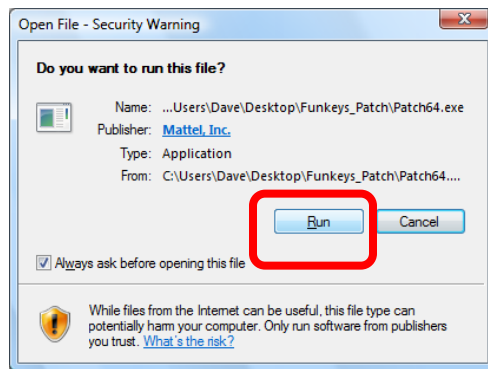
- Download the U.B. Funkeys™ 64-bit patch using the following link;  
[http://download.service.mattel.com/us/Funkeys/Funkeys\\_64bit\\_Patch.zip](http://download.service.mattel.com/us/Funkeys/Funkeys_64bit_Patch.zip)
- Click **“Save”**.



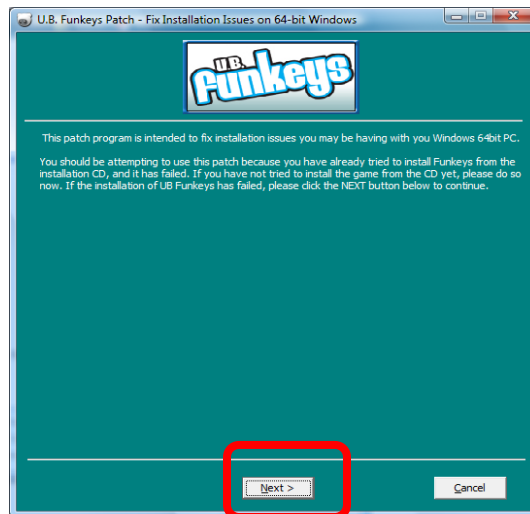
- Select **Desktop** and click **Save**.
- Navigate to the **Desktop** and find the file **Funkeys 64bit Patch.zip**.
- Extract both files to the **Desktop**.
- Close all open programs.
- Double-Click on extracted **“Patch64.exe”** file.



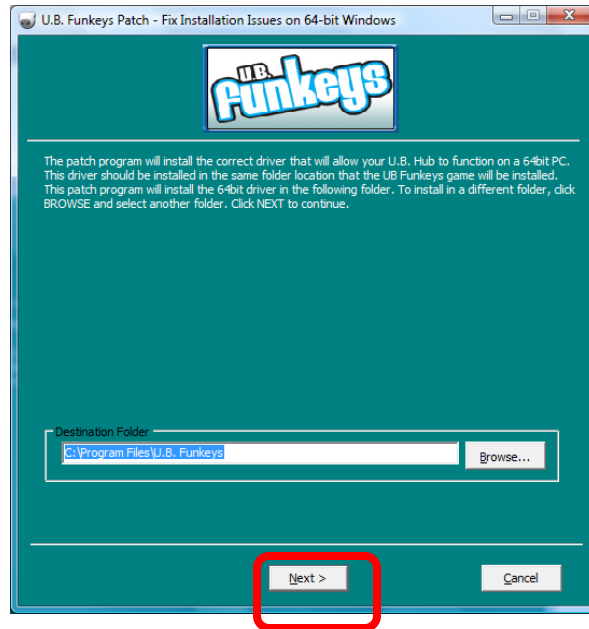
- Click **“Run”**.



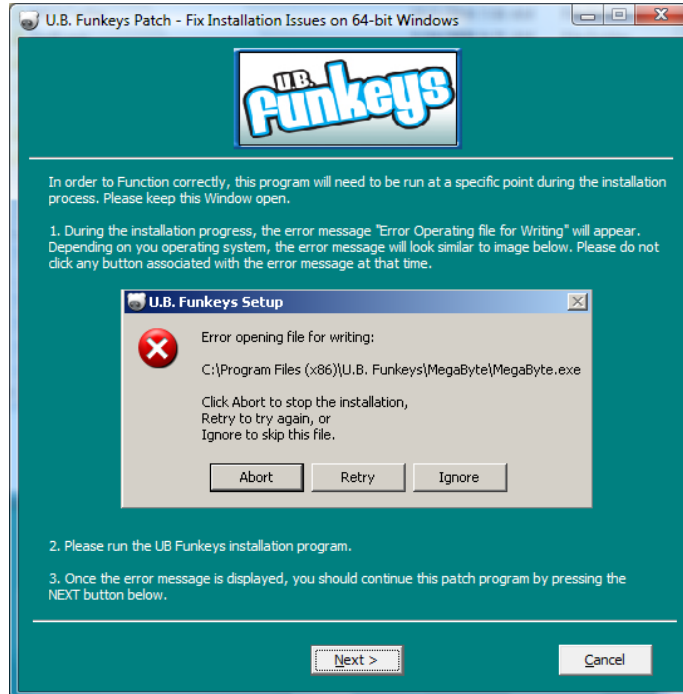
- When the patch program opens, click **“Next”**.



- The next window will show the default directory for **U.B. Funkeys™**. Do not change the folder information. Click **"Next"**.

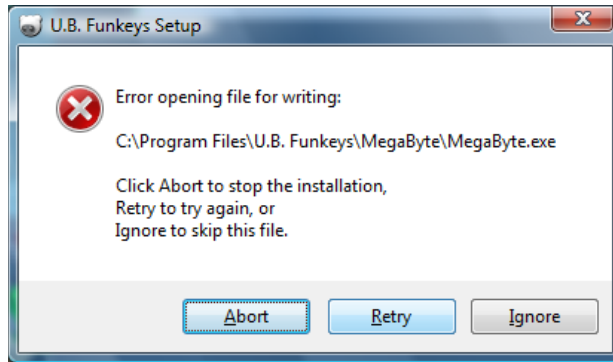


- **WHEN THE NEXT SCREEN APPEARS PLEASE LEAVE IT OPEN BUT DO NOT CLICK ANYTHING.**

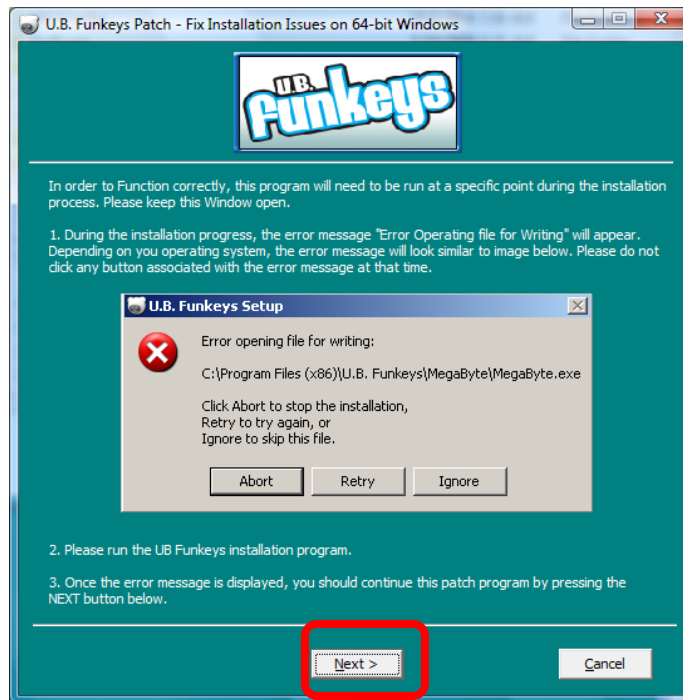


- Launch the **U.B. Funkeys™** installer.

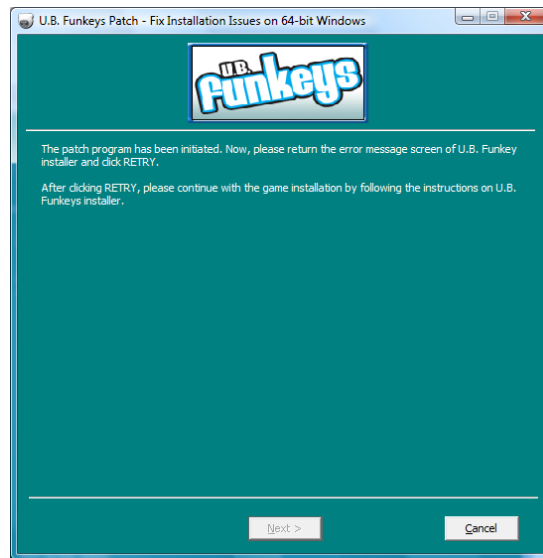
- When the U.B. Funkeys™ Hub drivers try to install an **“Error opening file for writing”** message will appear.



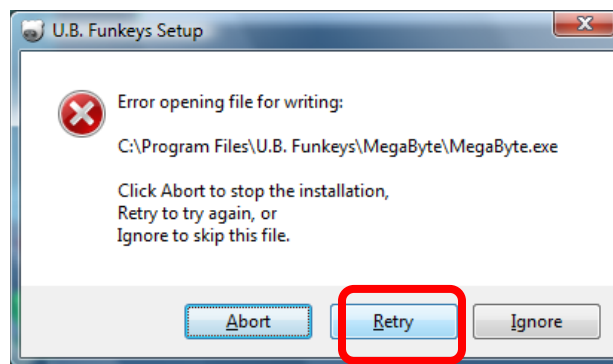
- Return to the **“U.B Funkeys™ Patch – Fix Installation Issues on 64-bit Windows”** screen. Click **“Next”**.



- A message saying the **“patch program has been initialized”** will open.



- Return to the **U.B. Funkeys™** software installer. Click "**Retry**".



- The **U.B. Funkeys™** software install will complete. Click **Finish** and launch the software. An update may be required after login to use the latest software.