

Fisher-Price®

Y6599



Please keep this instruction sheet for future reference,
as it contains important information.
Requires three AA (LR6) **alkaline** batteries (not included) for operation.
Adult assembly is required.
Tool required for assembly: Phillips screwdriver (not included).

fisher-price.com

Consumer Information



CONSUMER ASSISTANCE
1-800-432-5437 (US & Canada)
1300 135 312 (Australia)

service.fisher-price.com

Fisher-Price, Inc., 636 Girard Avenue, East Aurora, NY 14052.
Hearing-impaired consumers: 1-800-382-7470.

Outside the United States:

Canada: Mattel Canada Inc., 6155 Freemont Blvd.,
Mississauga, Ontario L5R 3W2; www.service.mattel.com.

Great Britain: Mattel UK Ltd, Vanwall Business Park,
Maidenhead SL6 4UB. Helpline: 01628 500303.
www.service.mattel.com/uk

Mattel Europa B.V., Gondel 1, 1186 MJ Amstelveen, Nederland.

Australia: Mattel Australia Pty. Ltd., 658 Church Street,
Locked Bag #870, Richmond, Victoria 3121 Australia.

New Zealand: 16-18 William Pickering Drive,
Albany 1331, Auckland.

ICES-003

This Class B digital apparatus complies with Canadian ICES-003. Operation is subject to the following two conditions: (1) this device may not cause harmful interference and (2) this device must accept any interference received, including interference that may cause undesired operation.

NMB-003

Cet appareil numérique de la classe B est conforme à la norme NMB-003 du Canada. L'utilisation de ce dispositif est autorisée seulement aux conditions suivantes : (1) il ne doit pas produire de brouillage et (2) l'utilisateur du dispositif doit être prêt à accepter tout brouillage radioélectrique reçu, même si ce brouillage est susceptible de compromettre le fonctionnement du dispositif.

FCC Statement (United States Only)

This equipment has been tested and found to comply with the limits for a Class B digital device, pursuant to Part 15 of the FCC Rules. These limits are designed to provide reasonable protection against harmful interference in a residential installation. This equipment generates, uses and can radiate radio frequency energy and, if not installed and used in accordance with the instructions, may cause harmful interference to radio communications. However, there is no guarantee that interference will not occur in a particular installation. If this equipment does cause harmful interference to radio or television reception, which can be determined by turning the equipment off and on, the user is encouraged to try to correct the interference by one or more of the following measures:

- Reorient or relocate the receiving antenna.
- Increase the separation between the equipment and receiver.
- Consult the dealer or an experienced radio/TV technician for help.

Note: Changes or modifications not expressly approved by the manufacturer responsible for compliance could void the user's authority to operate the equipment. This device complies with Part 15 of the FCC Rules. Operation is subject to the following two conditions: (1) This device may not cause harmful interference and (2) this device must accept any interference received, including interference that may cause undesired operation.

Consumer Information



WARNING

Prevent Entanglement Injury

Crib Mobile Use

- Keep out of baby's reach.
- Remove mobile from crib or playpen when baby begins to push up on hands and knees.
- This product may not attach to all crib designs. Do not add additional strings or straps to attach to a crib or playpen.

Stroller Toy Use

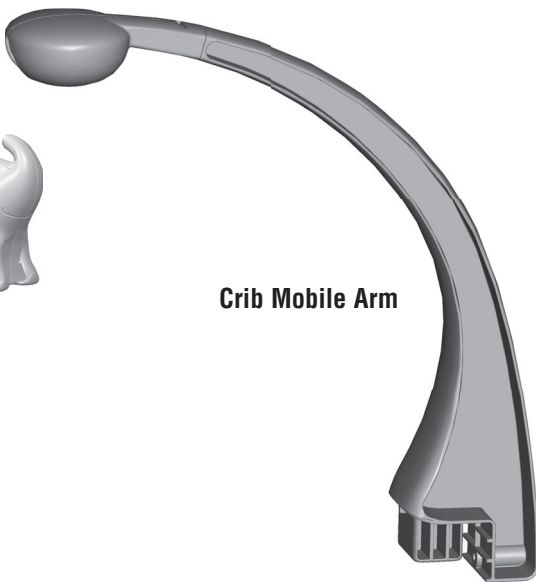
- Do not attach link directly to crib or playpen.

- Use as a mobile from birth until 5 months.
- A mobile is intended for visual stimulation and not to be grasped by a child.
- Wipe this toy with a clean, damp cloth. Do not immerse this toy.

Assembled Parts



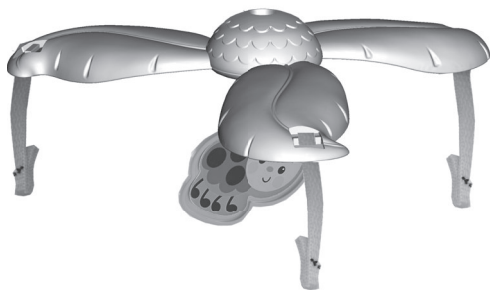
3 Removable Toys



Crib Mobile Arm



Mobile Link

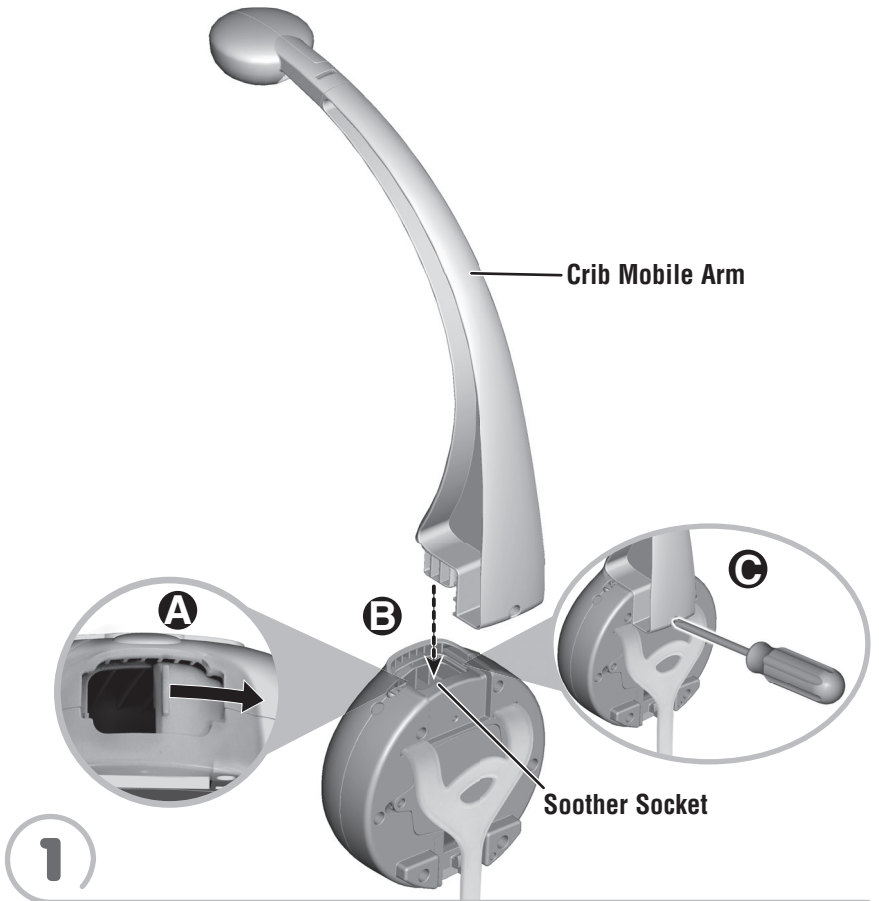


Mobile



Soother

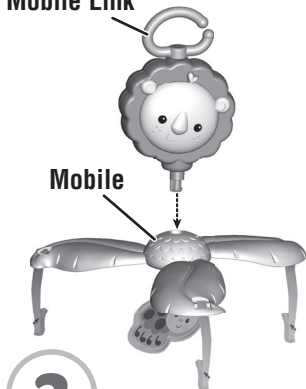
Crib Mobile Assembly



- 1
- Slide the door open on the top of the soother **A**.
 - Fit the mobile arm into the socket in the top of the soother **B**.
 - Tighten the permanent screw inside the mobile arm **C**. Pull up on the mobile arm to be sure it is secure.

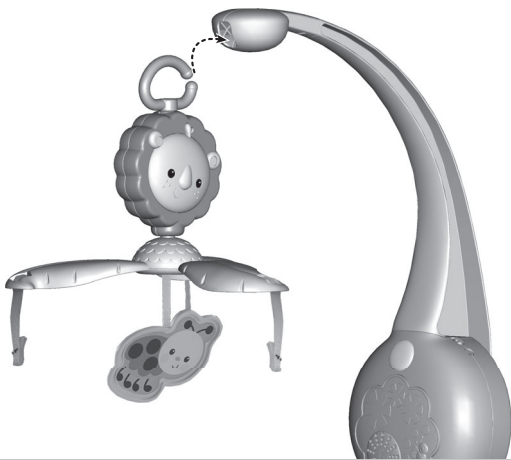
Crib Mobile Assembly

Mobile Link



Mobile

2



- Fit the mobile link peg into the top of the mobile. Push to **"snap"** in place.
- Fit the ends of the mobile link onto the mobile arm. Push to **"snap"** the link in place.

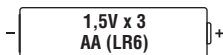
3



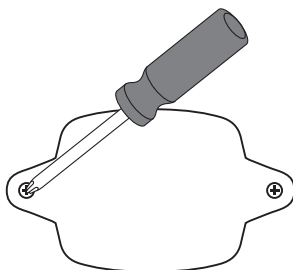
- Fit the ends of the straps on the mobile into the slot in each toy.
- Pull down on each toy to be sure it is secure.


Hint: The toys are removable for take-along fun! Push to remove the end of the strap from the slot on the toy.

Soother Battery Installation



For longer life, use **alkaline** batteries.



- Loosen the screws in the battery compartment door and remove the door.
- Insert three AA (LR6) **alkaline** batteries.
- Replace the battery compartment door and tighten the screws. Do not over-tighten.
- If this toy begins to operate erratically, you may need to reset the electronics. Slide the power/mode switch off and back on.
- When sounds become faint or stop, it's time for an adult to change the batteries.
-  Protect the environment by not disposing of this product with household waste (2002/96/EC). Check your local authority for recycling advice and facilities.

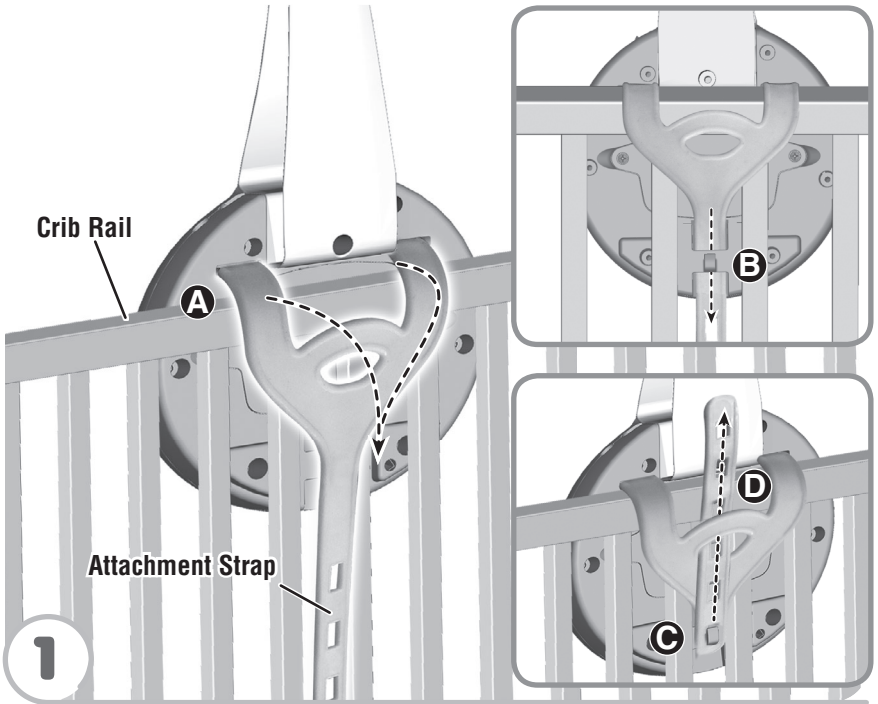
Battery Safety Information

In exceptional circumstances, batteries may leak fluids that can cause a chemical burn injury or ruin your product. To avoid battery leakage:

- Do not mix old and new batteries or batteries of different types: alkaline, standard (carbon-zinc) or rechargeable (nickel-cadmium).
- Insert batteries as indicated inside the battery compartment.
- Remove batteries during long periods of non-use. Always remove exhausted batteries from the product. Dispose of batteries safely. Do not dispose of this product in a fire. The batteries inside may explode or leak.
- Never short-circuit the battery terminals.
- Use only batteries of the same or equivalent type, as recommended.
- Do not charge non-rechargeable batteries.
- Remove rechargeable batteries from the product before charging.
- If removable, rechargeable batteries are used, they are only to be charged under adult supervision.

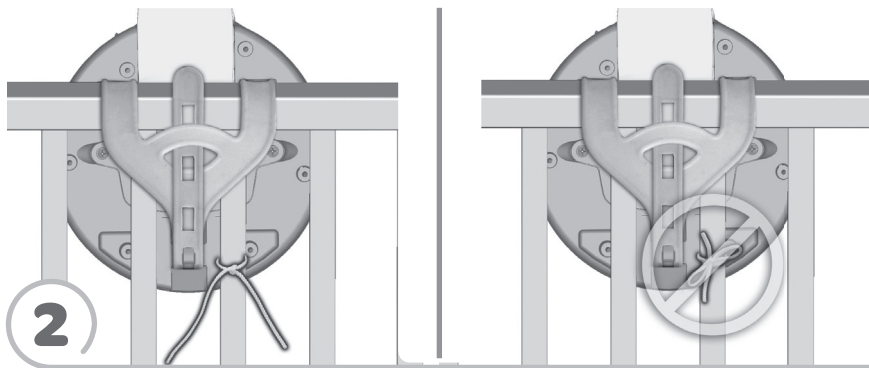
Crib Mobile/Soother Attachment

IMPORTANT! Always attach all provided fasteners (strings, straps, clamps, etc.) tightly to a crib or playpen according to the instructions. Do not add additional strings or straps to attach to a crib. Check frequently.



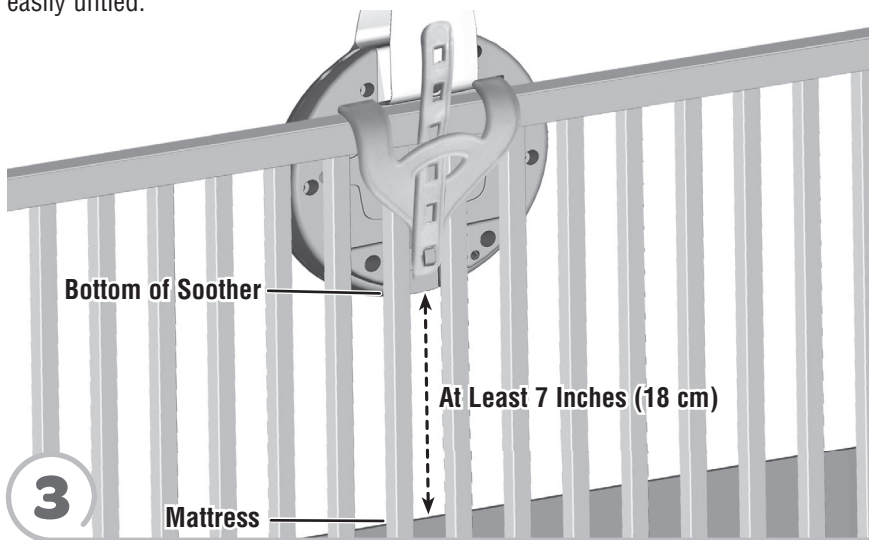
- Position the toy inside the crib. Make sure the attachment strap is on the outside of the crib **A**.
 - Slide the end of the attachment strap down through the slot on the back of the toy **B**.
 - Pull the end of the attachment strap up and fasten to the peg on the back of the toy **C**.
- Note:** This toy should be snug against the crib rail and spindles. Use the strap slot that provides the tightest fit.
- If you have excess strap, slide the free end of the attachment strap up through the opening near the top of the attachment strap **D**.

Crib Mobile/Soothing Attachment



- Tie the toy's strings to a crib spindle.

Note: It is better to tie the strings in a knot than a bow, since a bow may be easily untied.



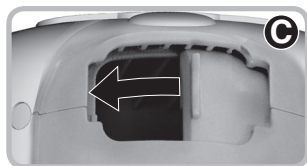
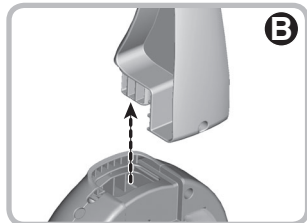
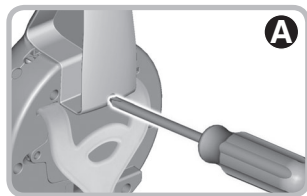
- Make sure the distance between the bottom of the soother and the crib mattress is **at least 7 inches (18 cm)**.
- If the distance is less than 7 inches (18 cm): readjust the attachment straps to lift the toy; or lower the crib mattress.

① Musical Crib Mobile



- Slide the power/mode switch to **♥ Heartbeat Sounds**, **♪ Music** or **○ OFF**.
- Press the button for music/sounds.
- Music/heartbeat sounds play for approximately 15 minutes. Slide the power/mode switch off and back on to restart.
- Turn the dial on the back of the mobile link clockwise to watch the mobile spin. Do not over-wind the dial.

2 Convert to Crib Soother



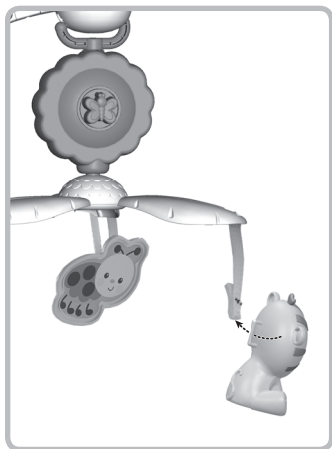
- Remove the mobile from the crib.
- Loosen the screw in the mobile arm **A** and remove the mobile from the soother **B**.
- Close the socket door on top of the soother **C**.
- Store the mobile in a safe place for future use. You can also remove the mobile link from the mobile arm and attach to a stroller. Or, remove the toys from the mobile for take-along fun!
- Re-attach the soother to the crib.

3 Stroller Mobile



- Pull the mobile link off the mobile arm.
- Fit the open end of the mobile link onto a stroller canopy.

4 Take-Along Toys



- Remove the toys from the mobile straps for take-along fun!