

Fisher-Price®

Y6600



Please keep this instruction sheet for future reference,
as it contains important information.

Requires three C (LR14) **alkaline** batteries (not included).

Adult assembly required. Tool required: Phillips screwdriver (not included)

Wipe this toy with a clean, damp cloth. Do not immerse.

This toy has no consumer serviceable parts. Do not take apart.

fisher-price.com

Consumer Information

**CONSUMER ASSISTANCE**
1-800-432-5437 (US & Canada)
1300 135 312 (Australia)
service.fisher-price.com

Fisher-Price, Inc., 636 Girard Avenue, East Aurora, NY 14052.
Hearing-impaired consumers: 1-800-382-7470.

Outside the United States:

Canada: Mattel Canada Inc., 6155 Freemont Blvd.,
Mississauga, Ontario L5R 3W2; www.service.mattel.com.

Great Britain: Mattel UK Ltd, Vanwall Business Park,
Maidenhead SL6 4UB. Helpline: 01628 500303.
www.service.mattel.com/uk

Mattel Europa B.V., Gondel 1, 1186 MJ Amstelveen, Nederland.

Australia: Mattel Australia Pty. Ltd., 658 Church Street,
Locked Bag #870, Richmond, Victoria 3121 Australia.

New Zealand: 16-18 William Pickering Drive,
Albany 1331, Auckland.

ICES-003

This Class B digital apparatus complies with Canadian ICES-003. Operation is subject to the following two conditions: (1) this device may not cause harmful interference and (2) this device must accept any interference received, including interference that may cause undesired operation.

NMB-003

Cet appareil numérique de la classe B est conforme à la norme NMB-003 du Canada. L'utilisation de ce dispositif est autorisée seulement aux conditions suivantes :

- (1) il ne doit pas produire de brouillage et
- (2) l'utilisateur du dispositif doit être prêt à accepter tout brouillage radioélectrique reçu, même si ce brouillage est susceptible de compromettre le fonctionnement du dispositif.

FCC Statement (United States Only)

This equipment has been tested and found to comply with the limits for a Class B digital device, pursuant to Part 15 of the FCC Rules. These limits are designed to provide reasonable protection against harmful interference in a residential installation.

This equipment generates, uses and can radiate radio frequency energy and, if not installed and used in accordance with the instructions, may cause harmful interference to radio communications. However, there is no guarantee that interference will not occur in a particular installation. If this equipment does cause harmful interference to radio or television reception, which can be determined by turning the equipment off and on, the user is encouraged to try to correct the interference by one or more of the following measures:

- Reorient or relocate the receiving antenna.
- Increase the separation between the equipment and receiver.
- Consult the dealer or an experienced radio/TV technician for help.

Note: Changes or modifications not expressly approved by the manufacturer responsible for compliance could void the user's authority to operate the equipment. This device complies with Part 15 of the FCC Rules. Operation is subject to the following two conditions: (1) This device may not cause harmful interference and (2) this device must accept any interference received, including interference that may cause undesired operation.

Consumer Information



WARNING

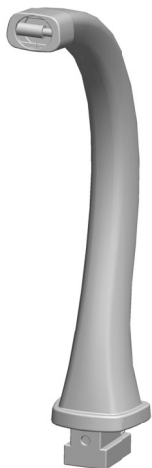
Prevent Entanglement Injury

- Keep mobile out of baby's reach.
- Remove mobile portion of product from crib or playpen when baby begins to push up on hands and knees.
- This product may not attach to all crib designs. Do not add additional strings or straps to attach to a crib or playpen.
- Use **ONLY** attached to a crib or playpen.

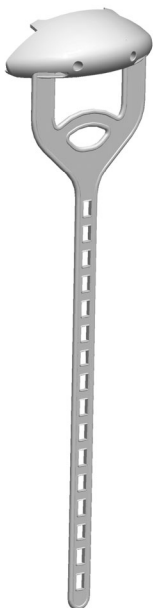
IMPORTANT! Always attach with all provided fasteners tightly to a crib or playpen according to the instructions. Do not add additional strings or straps to attach to a crib. Check frequently.

- The mobile portion of this product may be used from birth until 5 months.
- A crib mobile is intended for visual stimulation and is not to be grasped by a child.

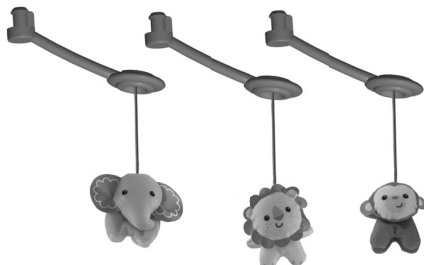
Parts



Mobile Arm



Crib Connector



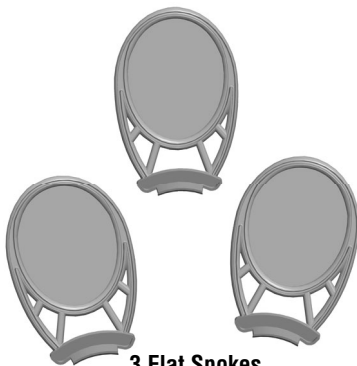
3 Character Toy Spokes



Mobile Hub



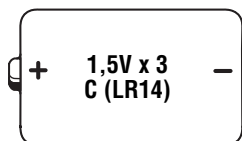
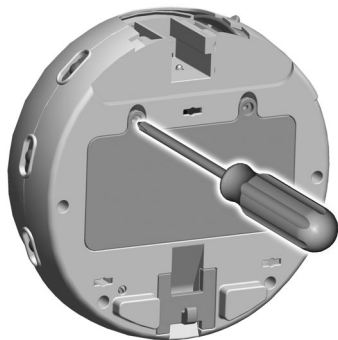
Soother



3 Flat Spokes

Note: The screws used to assemble the crib connector and mobile arm are attached to the product. Follow these instructions carefully to fully secure the screws. Tighten and loosen all screws with a Phillips screwdriver. Do not over-tighten the screws.

Battery Installation



-
- Loosen the screws in the battery compartment door with a Phillips screwdriver and remove the door.
 - Insert three C (LR14) **alkaline** batteries.
 - Hint: We recommend using **alkaline** batteries for longer battery life.*
 - Replace the battery compartment door and tighten the screws. Do not over-tighten.
 - If this product begins to operate erratically, you may need to reset the electronics. Slide the power/volume switch off and back on.
 - When sounds become faint or stop, it's time for an adult to change the batteries.
 - Protect the environment by not disposing of this product with household waste (2002/96/EC). Check your local authority for recycling advice and facilities.

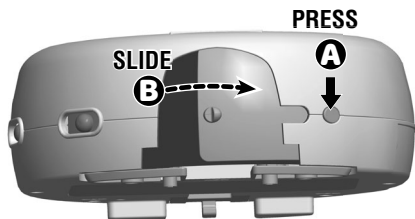


Battery Safety Information

In exceptional circumstances, batteries may leak fluids that can cause a chemical burn injury or ruin your product. To avoid battery leakage:

- Do not mix old and new batteries or batteries of different types: alkaline, standard (carbon-zinc) or rechargeable (nickel-cadmium).
- Insert batteries as indicated inside the battery compartment.
- Remove batteries during long periods of non-use. Always remove exhausted batteries from the product. Dispose of batteries safely. Do not dispose of product in a fire. The batteries inside may explode or leak.
- Never short-circuit the battery terminals.
- Use only batteries of the same or equivalent type, as recommended.
- Do not charge non-rechargeable batteries.
- Remove rechargeable batteries from the product before charging.
- If removable, rechargeable batteries are used, they are only to be charged under adult supervision.

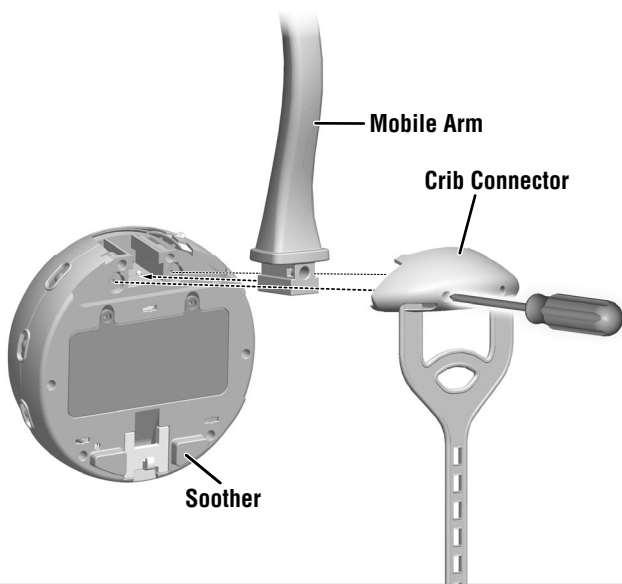
Mobile Assembly



TOP VIEW

1

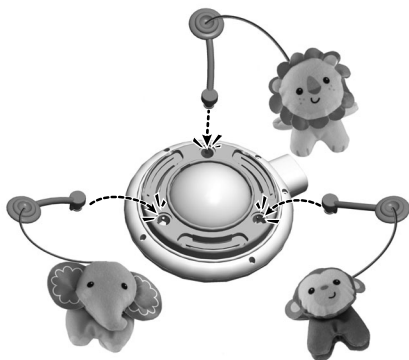
- First press the button on the soother next to the socket **A** and then slide the socket door open **B**.



2

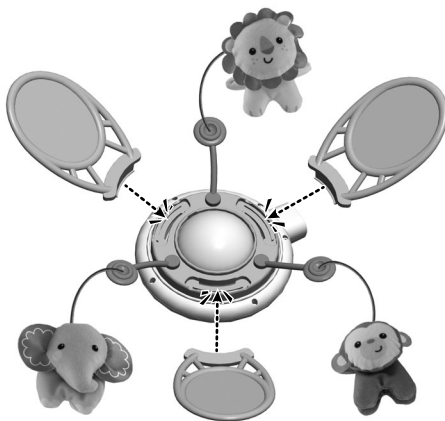
- Fit the mobile arm into the socket on the soother.
- Next, fit the crib connector onto the back of the soother.
- Tighten the screws in the crib connector.

Mobile Assembly



3

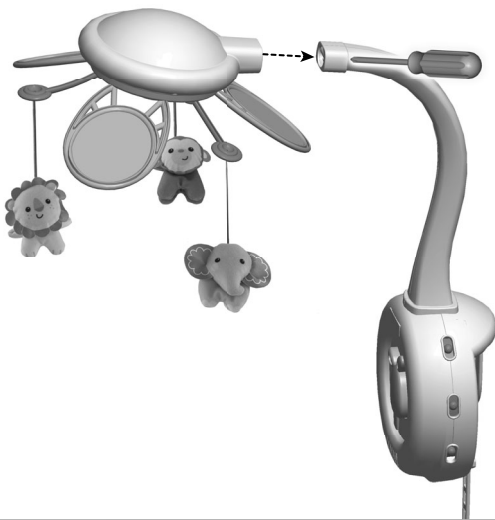
- Fit the character toy spokes onto the pegs on the mobile hub. Push to “**snap**” each spoke in place.



4

- Fit the flat spokes into the slots in the mobile hub. Push to “**snap**” each spoke in place.

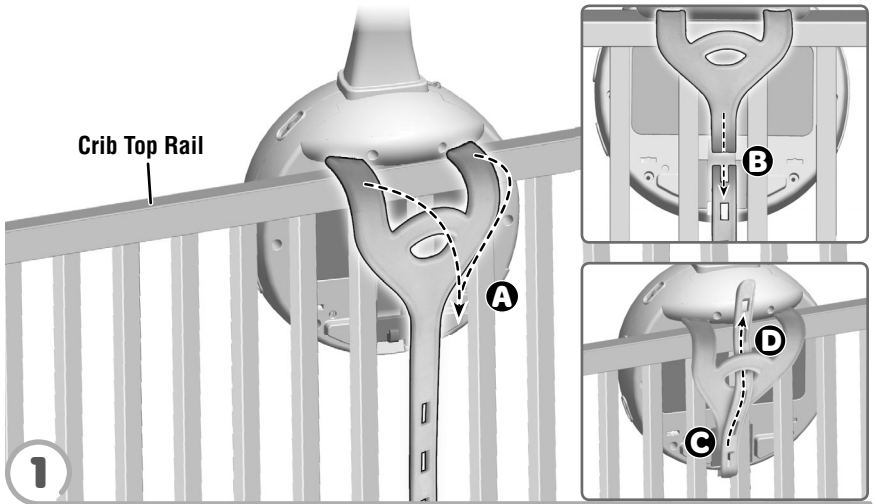
Mobile Assembly



5

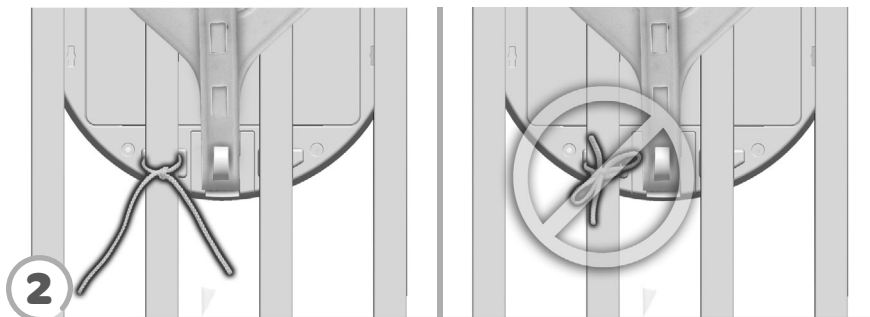
- Fit the mobile hub onto the end of the mobile arm. Tighten the screws in the mobile arm.
- Pull on the mobile hub to be sure it secured to the mobile arm.

Crib Attachment



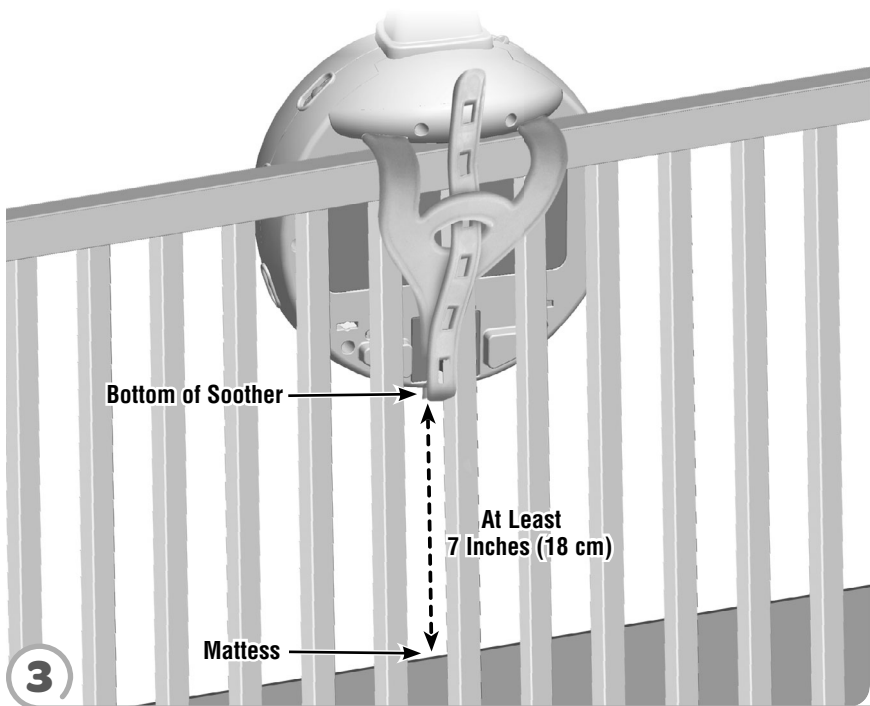
- Position the toy inside the crib. Make sure the attachment strap is on the outside of the crib **A**.
 - Slide the end of the attachment strap down through the slot on the back of the toy. Pull the end of the attachment strap up and fasten to the peg on the back of the toy **B**. Pull the end of the attachment strap up and fasten to the slot on the peg on the back of the toy **C**.
- Note:** This toy should be snug against the crib rail and spindles. Use the strap slot that provides the tightest fit.
- If you have excess strap, slide the free end of the attachment strap through the opening near the top of the attachment strap **D**.

Crib Attachment



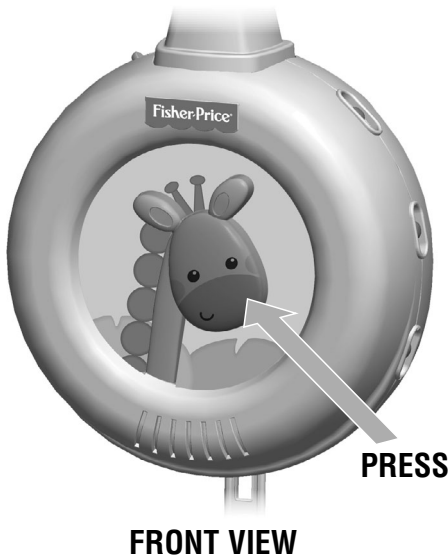
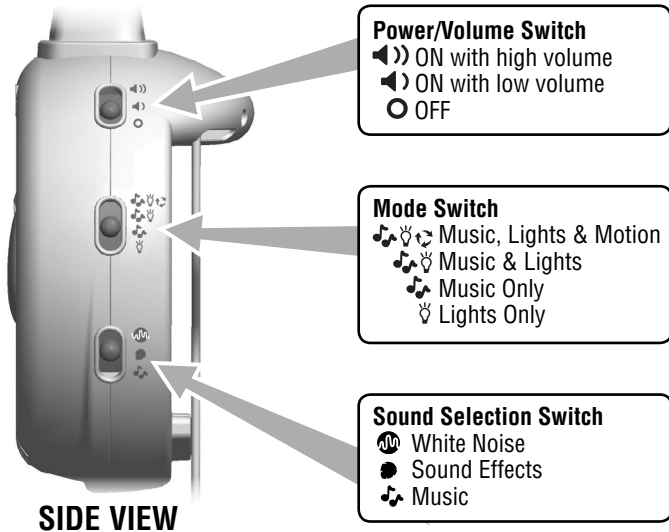
- Tie the soother strings to a crib spindle.

Note: *It is better to tie the strings in a knot than a bow, since a bow may be easily untied.*



- If the distance between the soother and the mattress is less than 7 Inches (18 cm), lower the crib mattress.

Use

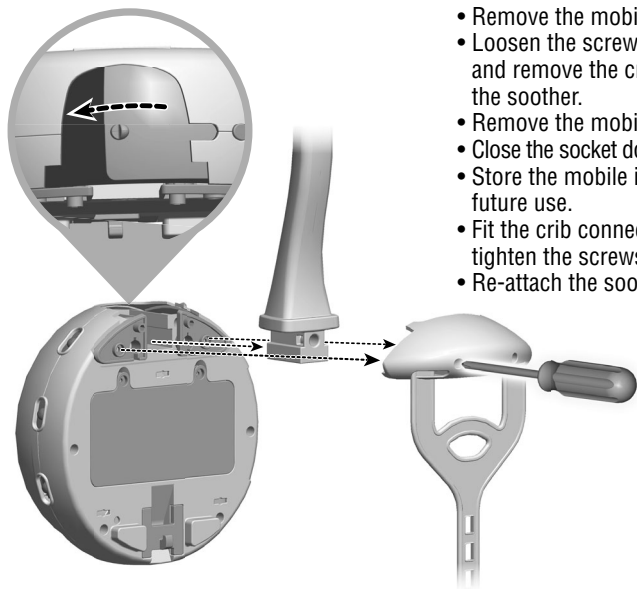


- Press the giraffe button to start music/lights/motion.

Notes:

- This product times out after approximately 10 minutes in music, lights & motion mode; approximately 15 minutes in music & lights mode; and approximately 20 minutes in music only and lights only modes.

Convert to Crib Soother



- Remove the mobile from the crib.
- Loosen the screws in the crib connector and remove the crib connector from the soother.
- Remove the mobile arm from the soother.
- Close the socket door on top of the soother.
- Store the mobile in a safe place for future use.
- Fit the crib connector onto the soother and tighten the screws.
- Re-attach the soother to the crib.