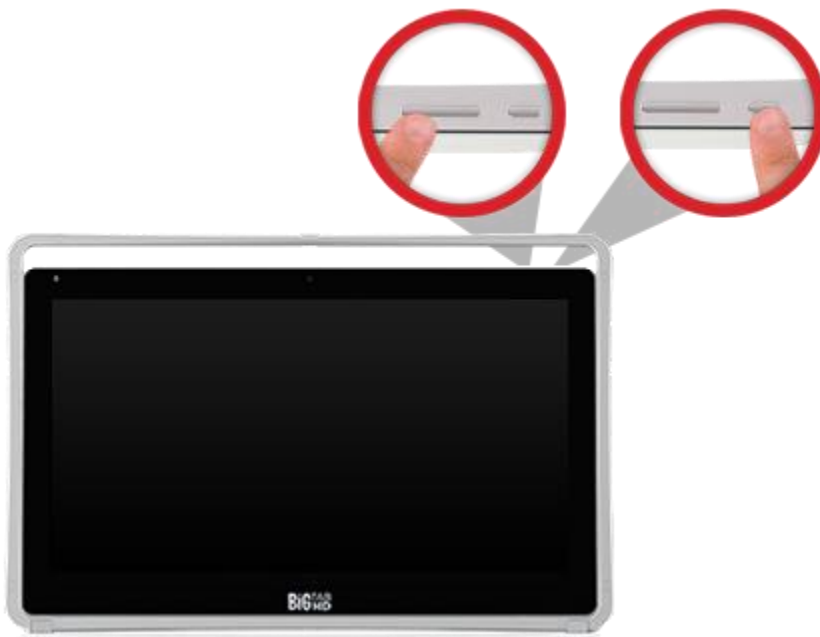


nabi Big Tab Factory Reset

1. Turn off the nabi Big Tab.



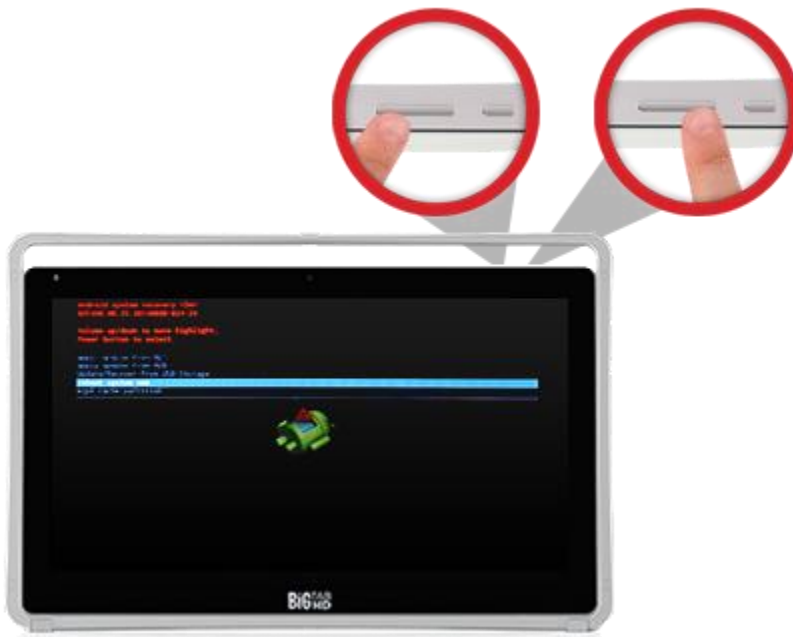
2. Press and hold the Volume – button first. Then press the Power button and hold them both until the system menu appears on the upper left corner of the screen.



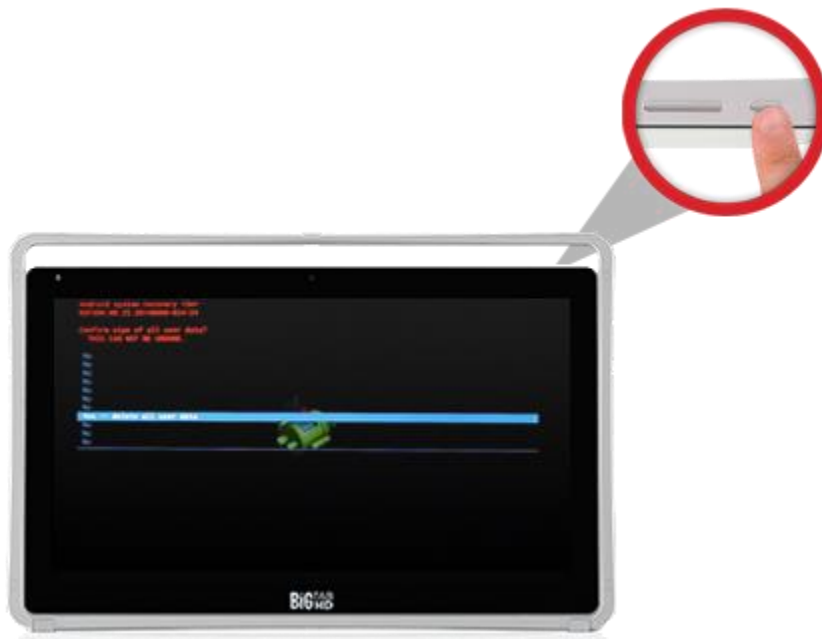
3. Use the Volume – button to highlight “Recovery Mode.” Then, press the Power button to select it.



4. Use the Volume – button to highlight “Wipe Data/Factory Reset.” Then, press the Power button to select that option.



5. Use the Volume – button to highlight “Yes – delete all user data” and press the Power button to select that.



6. It will take about five minutes to reboot the nabi Big Tab. Once the initialization is complete, you will see the Welcome screen.

